

Località:

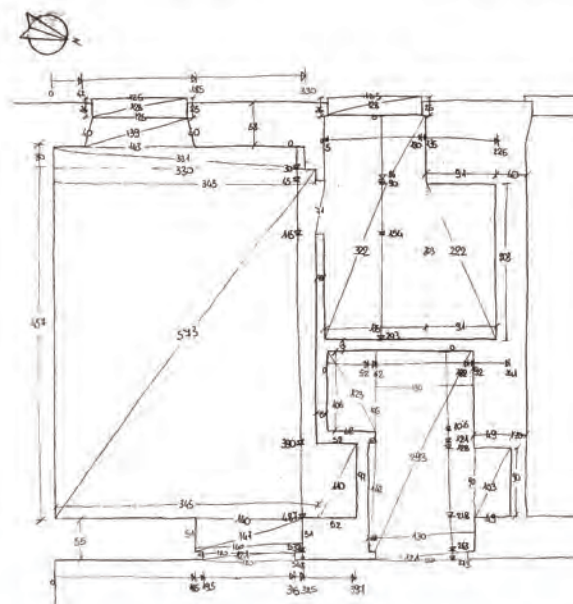
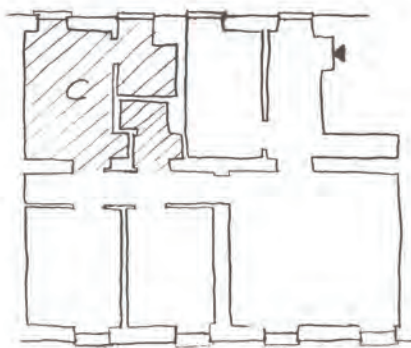
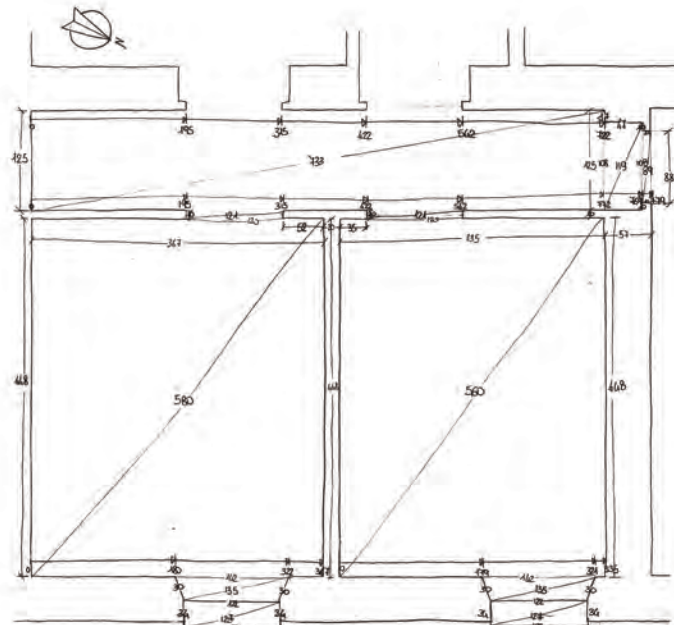
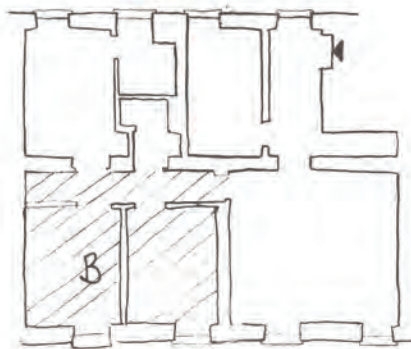
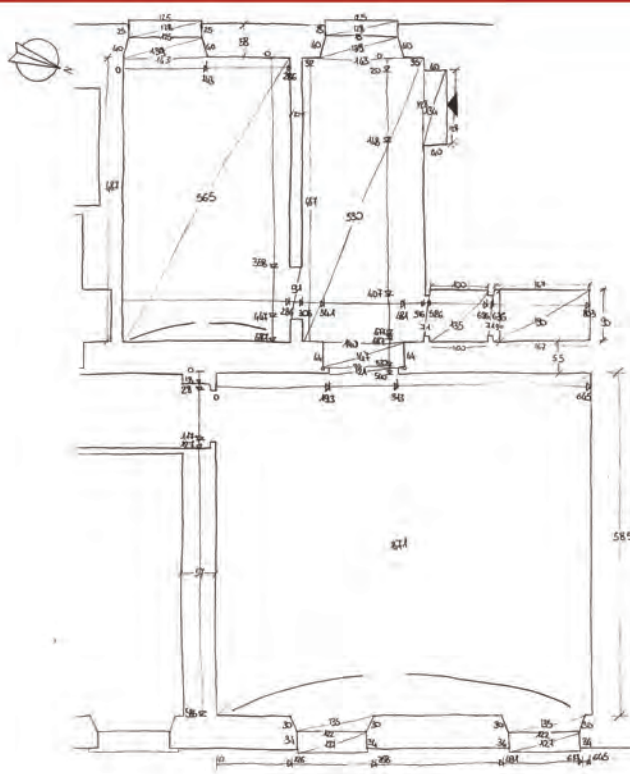
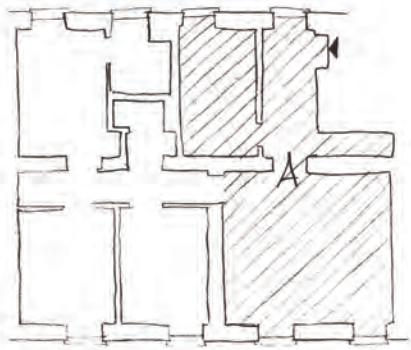
Indirizzo:

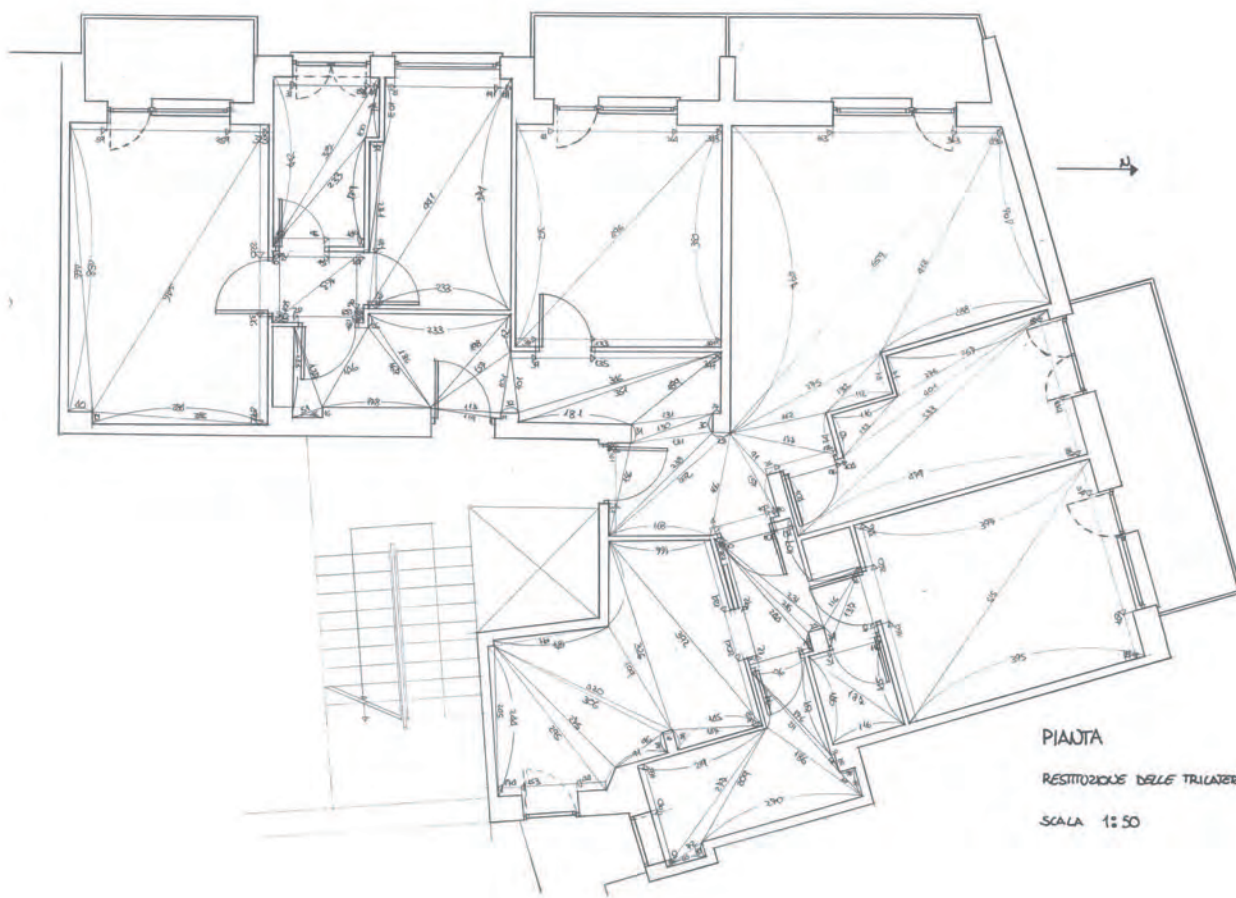
Tipologia edilizia:

Metratura:

Anno di costruzione:

STUDENTE
CAMERLINGO





PIANTA

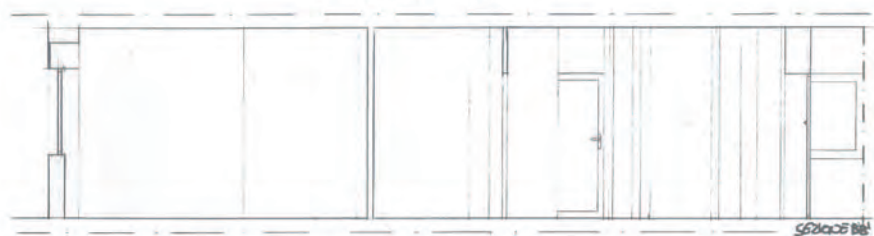
RESTITUZIONE DELLE TRIANGOLAZIONI

SCALA 1:50



SEZIONI SCALA 1:50

SEZIONE AA



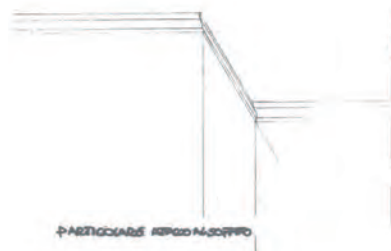
SEZIONE BB



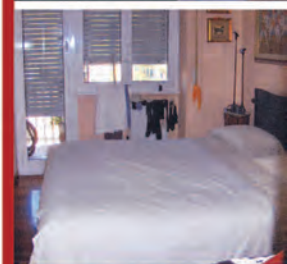
SCALA 1:200



PARTICOLARE ATTECCO A TERRA



PARTICOLARE APERTURA SOFFITTO

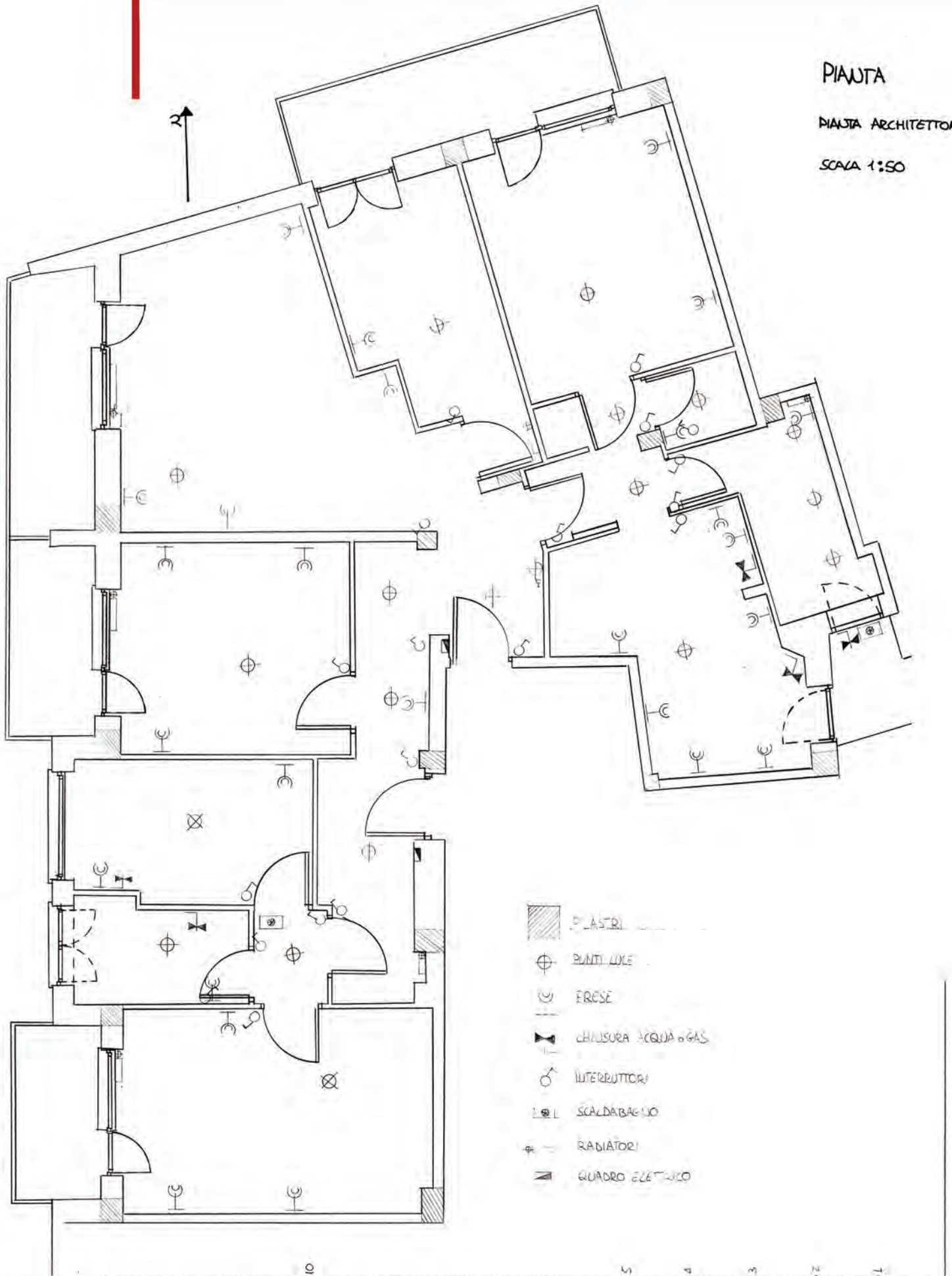


STUDENTE
CHELLI

PIANTA

PIANTA ARCHITETTICA

SCALA 1:50



Pavimento: blocchi di pietra bianca lucida di Trani
(40 x 40 cm), battiscopa: stesso materiale (h 7cm)

Pavimento: parquet doussie afria (7x50 cm) posto a 45°

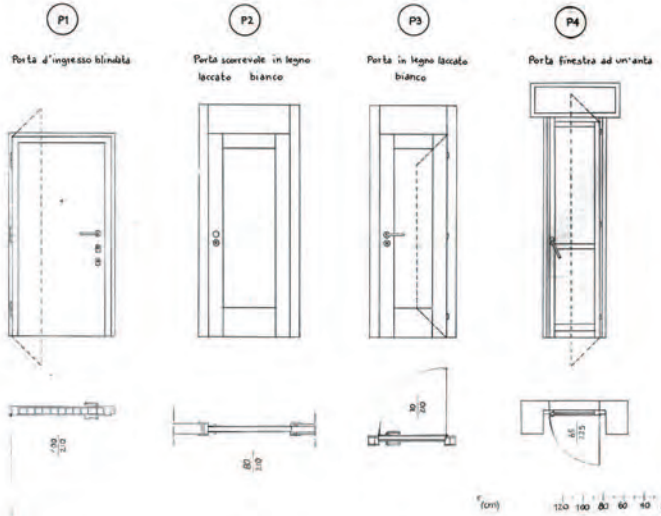
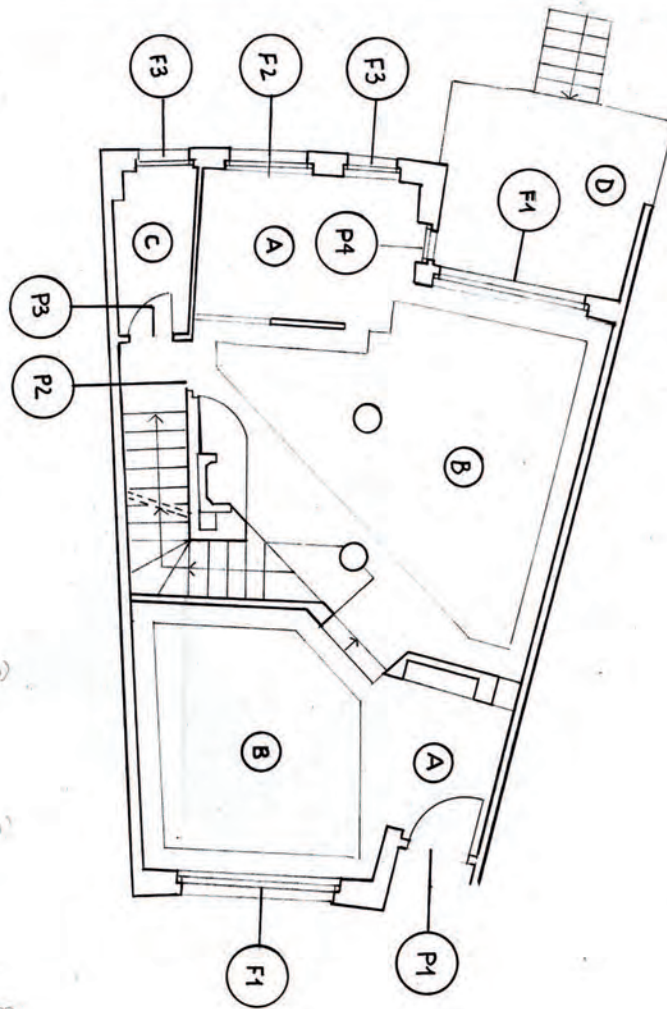
Pavimento: blocchi in marmo rosso verona (30x30cm)

Rivestimento: piastrelle color avorio (10x10cm)
listello in marmo rosso verona (5x20cm)
h totale dal pavimento = 2.35 m

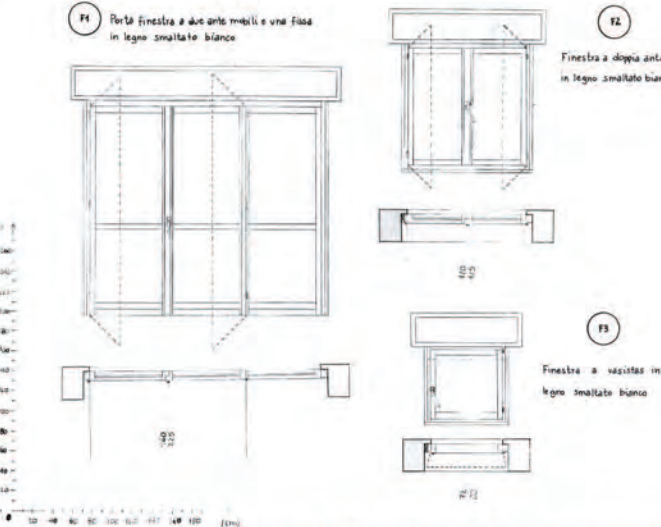
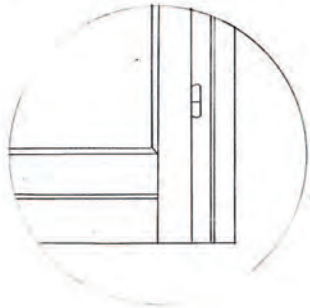
Rivestimento: piastrelle smaltate bianche (10x10cm)
listello in marmo rosso verona (10x20cm)
h totale dal pavimento = 1.60 m

Pavimento: pietra bianca di Trani (10x30 cm)

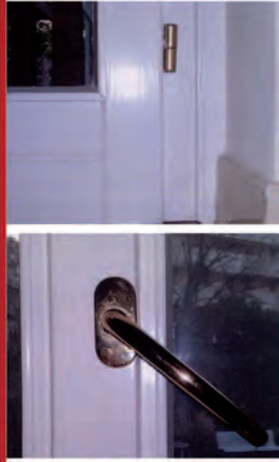
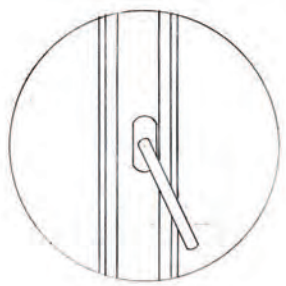
Rivestimento: pietra arenaria (40x50 cm)
h totale dal pavimento = 1.60 m



Attacco a terra



Dettaglio Maniglia



STUDENTE
CAMERLINGO

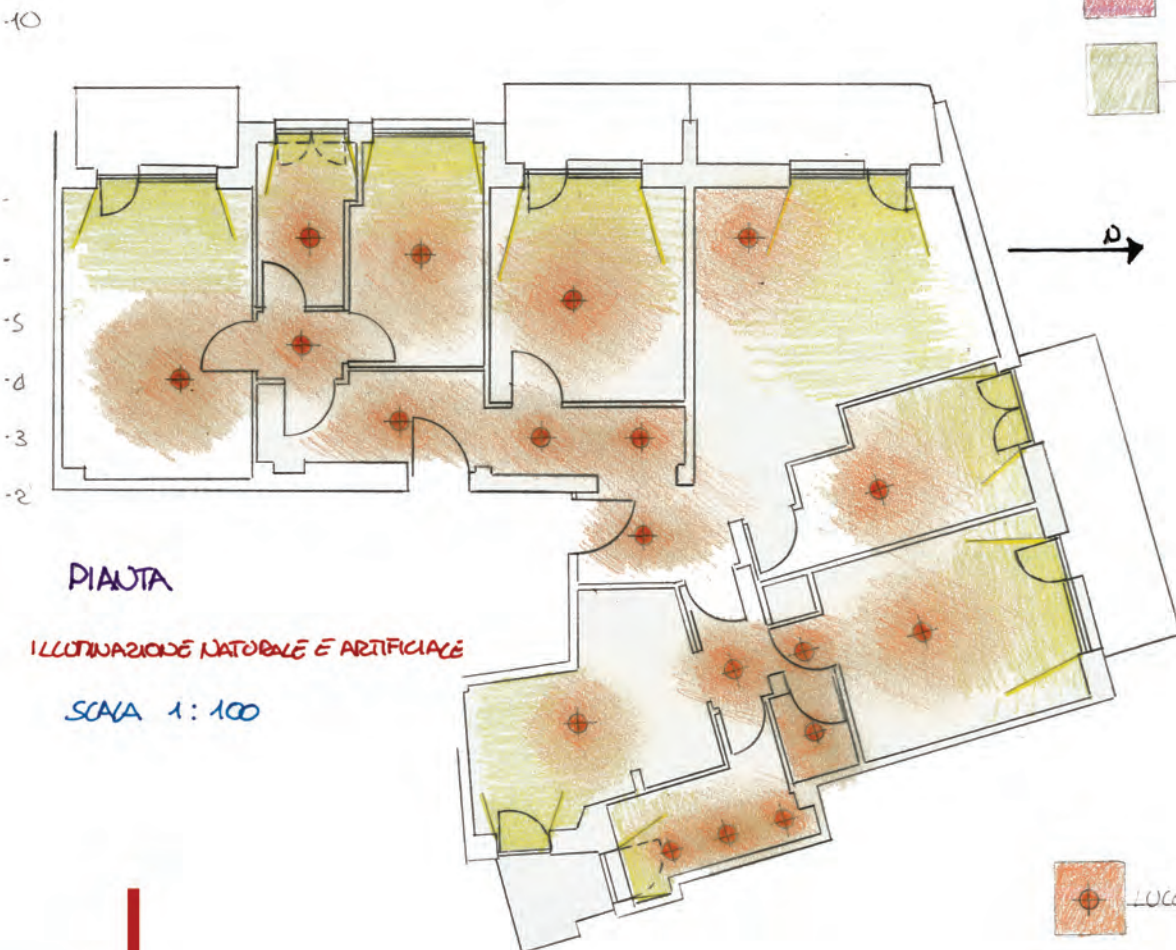


PIANTA

ANALISI ZONA GIORNO E NOTTE

SCALA 1:100

- ZONA NOTTE
- ZONA GIORNO
- SERVIZI



PIANTA

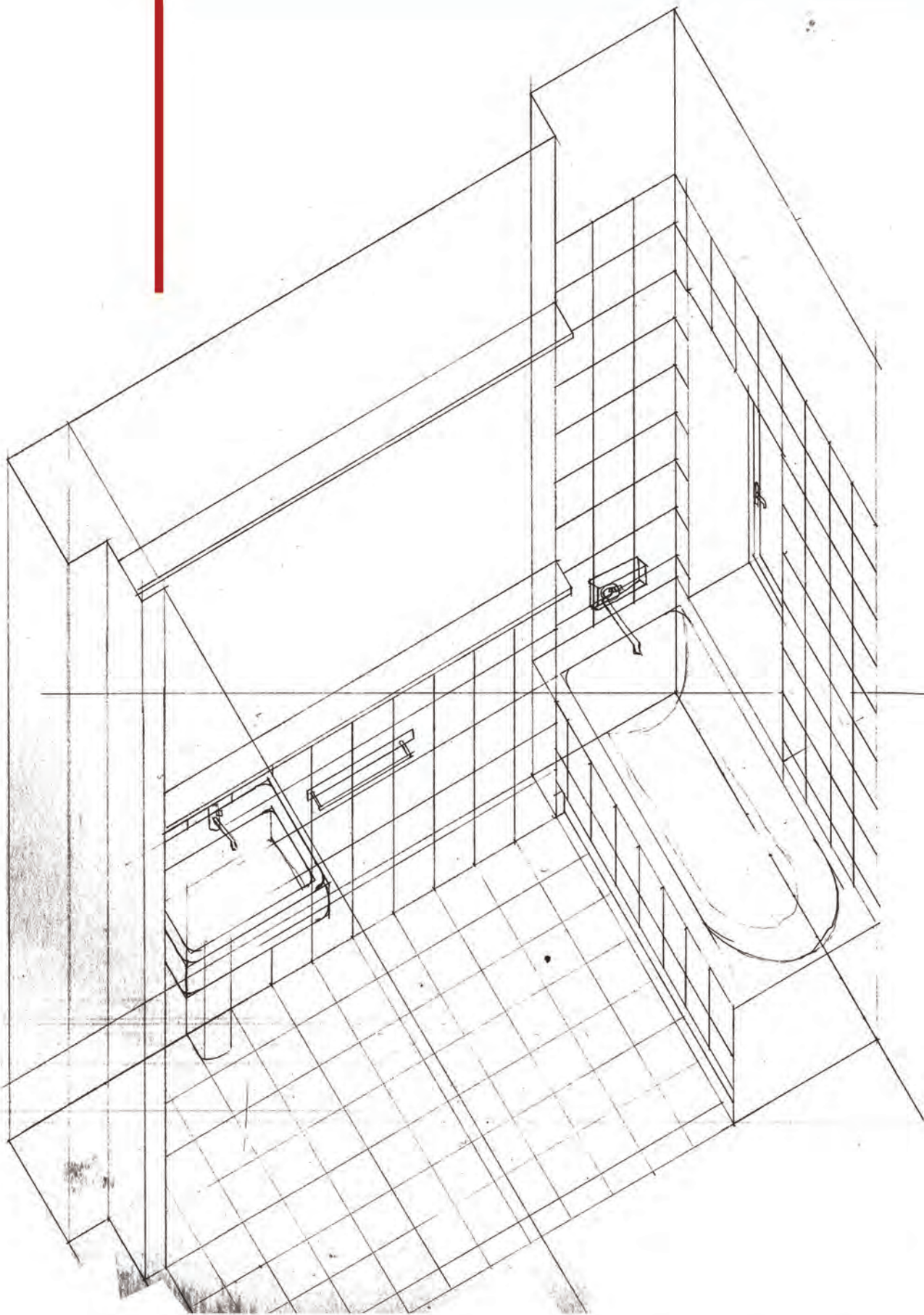
ILLUMINAZIONE NATURALE E ARTIFICIALE

SCALA 1:100

- LUCE ARTIFICIALE
- LUCE NATURALE



STUDENTE
CHELLI



DETTAGLIO ASSONOMETRICO DEL BAGNO